



July 2013



Jason B. Lichten,
 M.D., FACS



The Finishing Touches *Body Contouring After Massive Weight Loss*



Model

Gastric bypass surgery can be a life changing event for those with morbid obesity. Years of discomfort and unsuccessful attempts at weight loss finally come to an end!

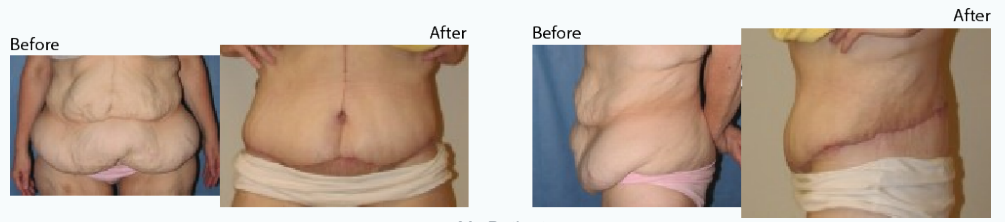
At long last, they can live inside healthy, comfortable bodies.

However, when their weight stabilizes, a new challenge crops up: loose, sagging skin.

Skin Elasticity

Unfortunately, skin tissue can be permanently damaged from extreme stretching. Skin that won't shrink naturally on its own has to be removed through plastic surgery—it's the only option.

That's where I come in. I've undergone extensive training to help re-contour the skin of the previously obese.



My Patient

A Long Process

My patients often need multiple body contouring surgeries to fit their extra skin to their new forms. It's a long process—I often see these patients for years.

EXCITEMENT ABOUNDS!

Introducing a new
skincare product line—**ZO**

Now available
in our office.

Receive 15% off any
skincare product
purchase or spa service.



Introductory offer valid through July 31.

Quick Links

[Home](#)

[Meet Dr. Lichten](#)

[Cosmetic Surgery](#)

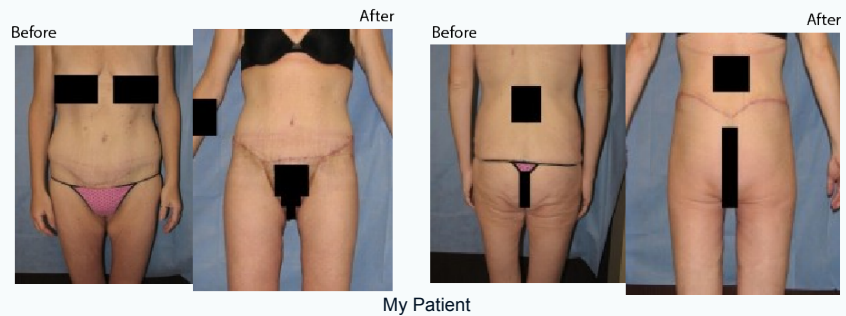
[Breast Augmentation](#)
[Breast Lift](#)
[Breast Reduction](#)
[Male Breast Reduction](#)
[Liposuction](#)
[Abdominoplasty](#)
[Mommy Makeover](#)
[Facelift, Neck Lift and](#)
[Brow lift](#)
[Eyelid Surgery](#)
[Rhinoplasty](#)

[Medical Spa Services](#)

[BOTOX® Cosmetic](#)
[Injectable Fillers](#)
[Laser Therapies](#)
[Resurfacing Options](#)
[Skincare Products](#)
[Fraxel re:pair®](#)

Photo Gallery

The relationships we strike up are among the most satisfying aspects of my work.



When is it done?

- ◆ It begins about 1 to 1-1/2 years after bariatric surgery, or when weight loss has been stable for 3 to 6 months.
- ◆ Further surgery happens every 3 to 6 months, depending on how quickly patients heal.

How long does each surgery take?

- ◆ As a general rule, 3-6 hours, depending upon which areas of the body are being treated.

Where do you start?

- ◆ Patients prioritize the areas that bother them most. I follow a protocol that meets their personal needs.

Is liposuction involved?

- ◆ For some patients, I use liposuction to reduce overall bulk before I start removing skin. This type of liposuction is a science unto itself. Damaged, inelastic skin requires more tumescent fluids than conventional lipo.

Is there scarring?

- ◆ Patients are left with scars down the arms, up the legs, across the lower stomach, sometimes at the waist. Basically, anywhere there is excess skin, it can be traded for scars.
- ◆ I can place midsection scars where they'll be hidden by underwear or in a belt-like position.
- ◆ For arms and legs, I hide the scars where clothing seams would be.

Will insurance pay for it?

- ◆ Probably not. This is classified as cosmetic surgery and is not covered. Sometimes, insurance will cover abdominal surgery where there is documented skin breakdown and irritation.

What are the risks?

Massive weight loss body contouring is riskier than other types of body contouring.

Body

Contouring

[Arm Lift](#)
[Body Lift \(Belt Lift\)](#)
[Liposuction](#)
[Mommy Makeover](#)
[Thigh Lift](#)
[Tummy Tuck](#)

Breast Surgery

[Breast Augmentation](#)
[Breast Augmentation Revision](#)
[Breast Lift](#)
[Breast Reduction](#)

Facial Surgery

[Eyelid Surgery \(Blepharoplasty\)](#)
[Face Lift & Neck Lift](#)
[Otoplasty \(Ear Shaping\)](#)
[Rhinoplasty \(Nose Job or Nose Reshaping\)](#)

Minimally Invasive

[Fraxel re:pair[®] Facial Resurfacing](#)
[Injectable Fillers](#)
[Tattoo Removal](#)

- ◆ Fluid shifts occur after large amounts of skin and fat are removed.
- ◆ Swelling is common, and in certain areas of the body (the abdomen and back) it can take months to subside.
- ◆ Because the skin has lost its elasticity, patients can sometimes have slower wound healing.

Will I lose my navel?

- ◆ Often I have to repair incisional hernias. Between that and abdominoplasty (tummy tuck surgery), I may have to move the navel. This will be discussed ahead of time.

We Will Supplement Your Nutrients

Bariatric patients often lack key nutrients after losing massive amounts of weight. Calcium and potassium are most likely to be at low levels. We check lab values at least a week before every surgery. Checking early allows time to correct deficiencies.



Am I a Candidate?

- ◆ If you're healthy and your body weight has stabilized after bariatric surgery or other massive weight loss, you are probably eligible.
- ◆ Certain medical problems *may* make you ineligible.
- ◆ We judge each case individually, taking a variety of important health-related factors into account.



Let Me Evaluate Your Case

The best way to find out whether you can begin enjoying your body again is to come in and see me. I have long experience in this field. You'll be placing yourself in expert hands.

Let me just add that I thoroughly admire people willing to undergo the discomfort of bariatric surgery. I enjoy contributing the finishing touch to their long and arduous journeys.

Feel free to [share this article](#) with your family and friends

EXCITEMENT ABOUNDS!

Introducing a new skincare product line—ZO
Now available in our office.

Receive 15% off any skincare product
purchase or spa service.

Introductory offer valid through July 31.



Lancaster Office 135 North Ewing Street, Suite, Lancaster, Ohio 43130 Phone: 740.653.5064

Columbus Office 5969 E. Broad Street, Suite 300A, Columbus, Ohio 43213 Phone: 614.862.8008

[Forward email](#)



This email was sent to rachelgordonlichten@yahoo.com by joyce@ohioplastic.com | [Update Profile/Email Address](#) | Instant removal with [SafeUnsubscribe™](#) | [Privacy Policy](#).

Central Ohio Plastic Surgery | 135 N Ewing St | Suite 202 | Lancaster | OH | 43130



Try it FREE today.